



ARCHITECTURAL & URBAN LANDSCAPING



TOGETHER WE BUILD LANDMARKS FOR HUMANITY



Washington Union Station, Washington, D.C., USA
BETHEL WHITE™
Granite

7	OUR STORY
9	OUR VALUE PROPOSITION
10	OUR QUARRIES
15	OUR APPLICATIONS

17	Dark Stones
-----------	--------------------

18	CAMBRIAN BLACK™
20	SAINT HENRY BLACK™
22	AMERICAN BLACK™ AND AMERICAN MIST™
24	KODIAK BROWN™
26	LAURENTIAN GREEN™
28	PICASSO™
30	SAINT PIERRE™

33 Neutral Stones

- 34 CALEDONIA™
- 36 INDIANA LIMESTONES
- 38 SAINT CLAIR™
- 40 FRENCH LIMESTONES
- 46 TITANIUM PEARL™
- 48 BARRE GRAY™
- 50 STANSTEAD GREY™
- 52 GREEN COUNTY GRANITE™
- 54 SAINT SEBASTIEN™

57 Light Stones

- 58 JAY WHITE™
- 60 BETHEL WHITE™
- 62 WHITE MOUNT AIRY GRANITE™
- 64 GEORGIA MARBLES



SUCCESS IS BUILT ON *passion*

Polycor is a North American natural stone quarrier and fabricator. By joining forces with other industry pioneers, we provide our customers with centuries of stone expertise. Our vision is to establish new foundations of global leadership by setting the standard for excellence in sustainable natural stone. Our products are built to last so that future generations can continue to fall in love with natural stone.

Empire State Building Installation



GLOBAL
WITH A *local*
FOOTPRINT

QUARRIED
IN NORTH
AMERICA

QUARRY
& PLANT
OWNER

QUALITY
CONTROL

SUSTAINABLE

BLENDS
WITH
NATURE

DURABLE

RESISTS
FREEZE-
THAW
CYCLES

GREATER
AVAILABILITY
& SHORTER
LEAD TIME

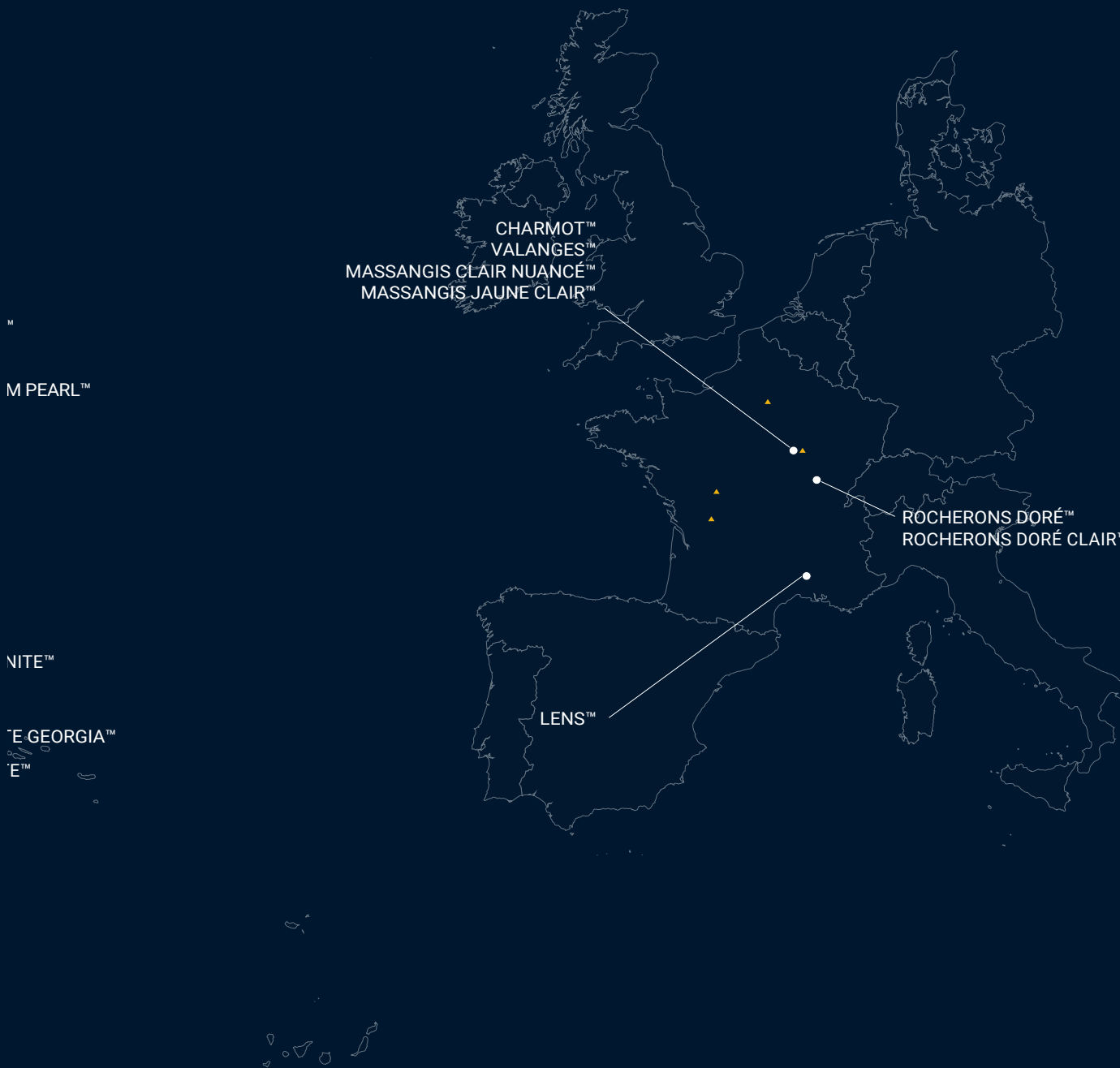
VIRTUALLY
MAINTENANCE
FREE

DESIGN
FLEXIBILITY

BALANCE
BETWEEN
AESTHETIC
& PERFOR-
MANCE

ADAPTABLE
TO ANY
PROJECT






Quarries
 Plants

A photograph of a quarry wall made of large, rectangular stone blocks. The blocks are stacked in a staggered pattern, creating a textured, layered appearance. At the base of the wall, there is a pool of water that reflects the sky and the wall. The lighting is soft, suggesting a late afternoon or early morning setting. The overall tone is natural and earthy.

BY THE EARTH, FOR THE EARTH

Our naturally sustainable stones allow us to embrace our duty to the world around us with passion. As a business, we take care to have a positive influence, and we strive to carve a path that leaves the world a little better off than before.



NATURALLY SUSTAINABLE™

From our quarry workers to the members of our executive committees, environmentally-conscious practices are a foundational part of Polycor's operations and green industry business model.



Building a naturally sustainable future → together



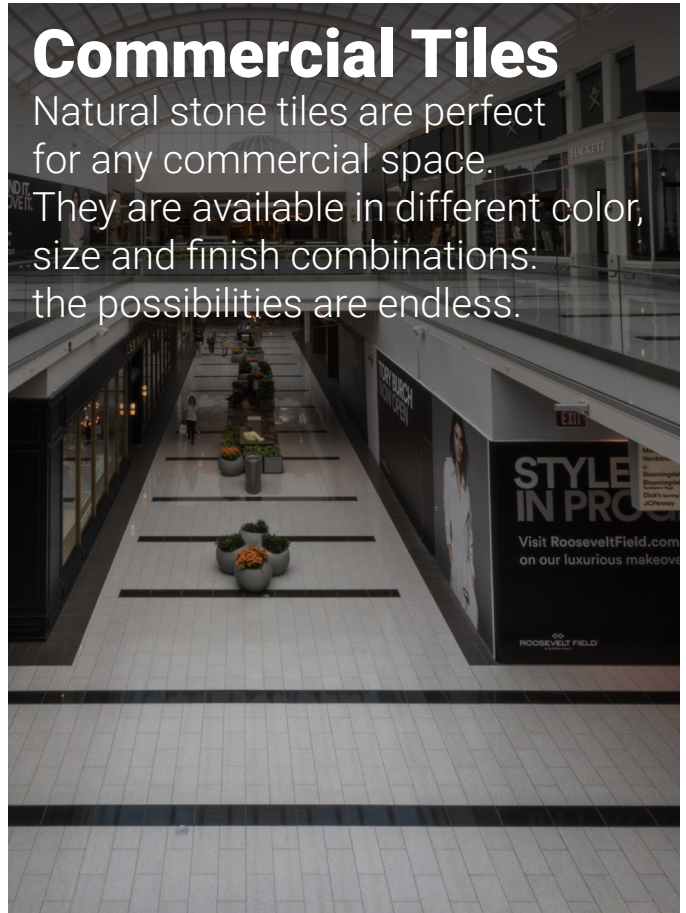
Architectural Stone

Architectural stone is exceptionally versatile. It offers the possibility of creating a wide variety of classic or modern structural elements such as sculptures or ornaments for restoration projects or new builds.



Commercial Tiles

Natural stone tiles are perfect for any commercial space. They are available in different color, size and finish combinations: the possibilities are endless.



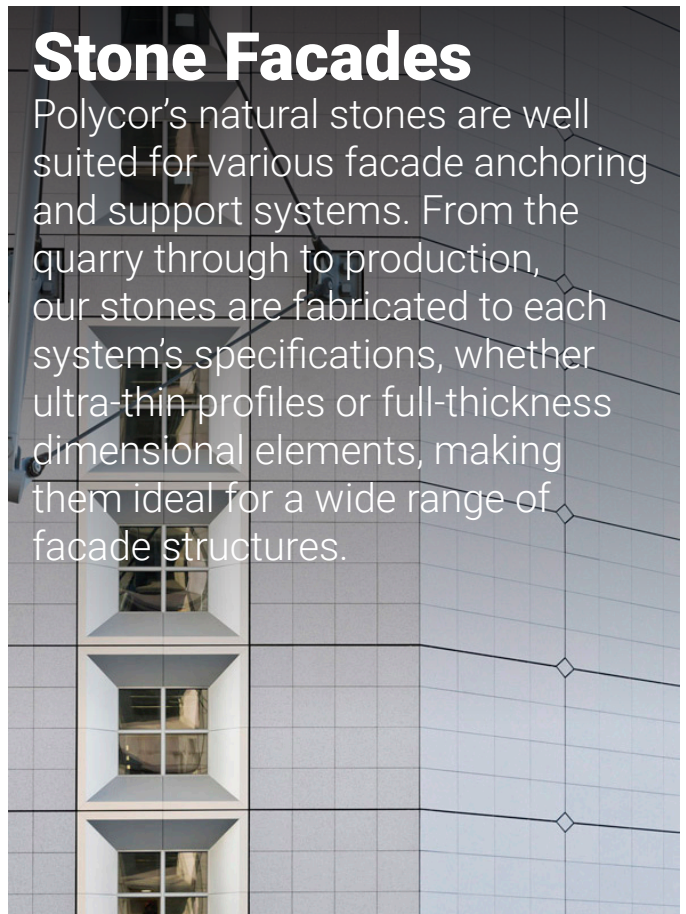
Commercial Cut-To-Size

We have the expertise to make any vision a reality, from a simple wall to a bench, from outstanding architectural projects to water fountains; you name it, we can make it happen.



Stone Facades

Polycor's natural stones are well suited for various facade anchoring and support systems. From the quarry through to production, our stones are fabricated to each system's specifications, whether ultra-thin profiles or full-thickness dimensional elements, making them ideal for a wide range of facade structures.





Place des Festivals, Montréal, QC
Architect : Daoust Lestage
2009



DARK STONES



Vertical application, flamed finish



Kruizenga Art Museum
Holland, MI

The new Kruizenga Art Museum at Hope College in Holland, Michigan, is a modernist's dream. Designed by Progressive AE Architecture, it exhibits an unconventional, curved exterior, reminiscent of a painter's palette in shape.

The two-story façade is wrapped in 26 overlapping panels of CAMBRIAN BLACK™ granite, creating a curved perimeter. Each panel is 22' tall and is comprised of nine individual granite slabs.

Architect: Progressive AE Architecture



CAMBRIAN BLACK™

Granite

Elevate your designs with this Canadian masterpiece sourced from our Quebec quarry. Our selection of stunning finishes accentuates its finest qualities, illuminating the pure-black crystals setting them aglow with radiant reflections.



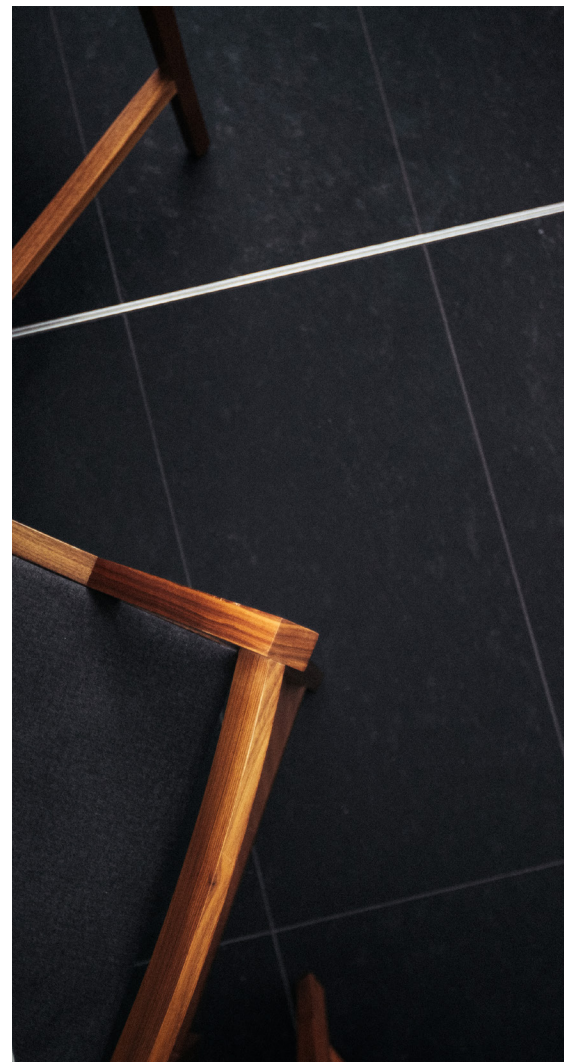
Québec, Canada



Pavillon Pierre-Lassonde
Québec, QC

The Pavillon Pierre Lassonde, located on the prestigious Grande Allée in Quebec City, is the gateway to the MNBAQ museum building. Its harmoniously layered architecture features expansive surfaces of SAINT HENRY BLACK™ granite. Designed by OMA (Office for Metropolitan Architecture) the building is seamlessly integrated to the city's existing historical landscape, accentuating the structure's contemporary forms and introducing innovative features for everyday use.

Architect: Provencher Roy



Commercial tiles, honed finish



SAINT HENRY BLACK™ Granite

Presenting yet another gem from Québec, this granite is a tapestry woven with oversized, eye-catching metallic crystals, imbuing this classic stone with a touch of contemporary sophistication.



Québec, Canada



AMERICAN BLACK™ granite, Eclad system installation, antique finish
AMERICAN BLACK™ granite, tiles, antique finish

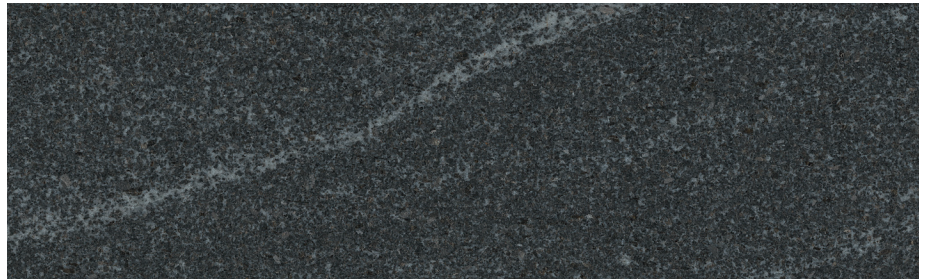


Polycor Inc. Headquarters
Québec City, QC

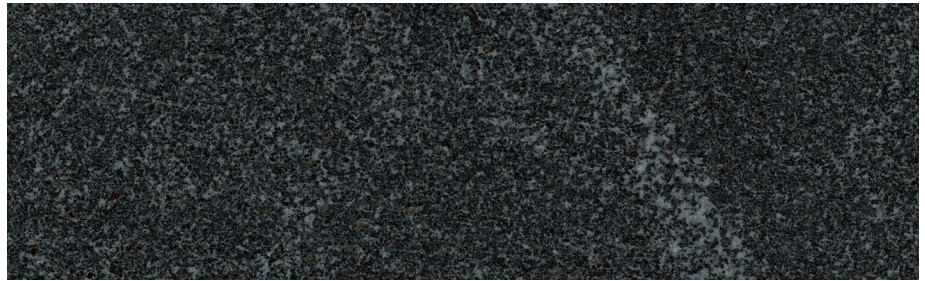
Constructed in 1875 under the direction of Joseph-Ferdinand Peachy, the grand Renaud building is a seamless fusion of American architectural styles and Italian Renaissance Revival influences. This building stands out as one of the pioneering instances of this particular style of commercial architectural in Quebec City.

Upon acquiring the space in 2017, Polycor enlisted the services of Agence Spatiale to revamp the office arrangement for the relocation of its headquarters. The objective was to preserve numerous original historic features while incorporating contemporary elements, aiming for a balanced integration of authentic and modern materials.

AMERICAN BLACK™
Granite



AMERICAN MIST™
Granite



AMERICAN BLACK™ AND AMERICAN MIST™

Granites

Quarried in the beautiful state of Pennsylvania, these rich black granites have pronounced white veining, giving their pattern a marble-like quality. Their unique wavy pattern creates movement, drawing the eye and making them the ideal centerpiece for any space.



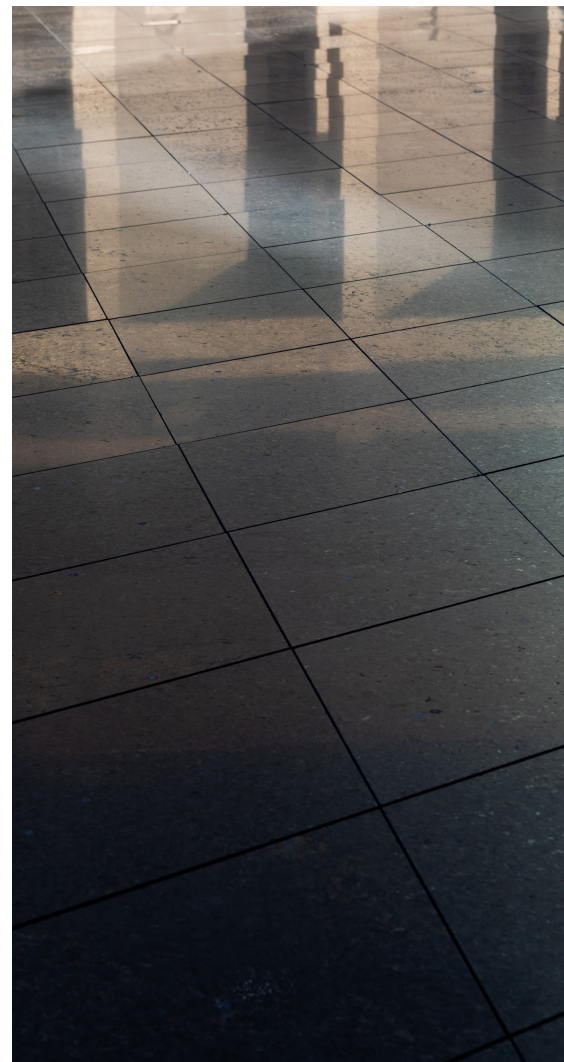
Pennsylvania, USA



Christian Science Plaza Reflecting Pool
Boston, MA

The Christian Science Plaza Reflecting Pool in Boston has undergone a transformative enhancement. Clear and prominent informational gateways now guide visitors, eliminating barriers and offering a warm welcome from all major entry points. The redesign places a strong emphasis on environmental sustainability, efficiently reducing municipal water consumption and stormwater runoff. Moreover, the expanded green space footprint not only adds a touch of lush beauty but also ensures the plaza remains captivating throughout the year, even when the pool lies empty.

Architect: Carol R. Johnson Associates



Pavers, low honed and honed finish



KODIAK BROWN™

Granite

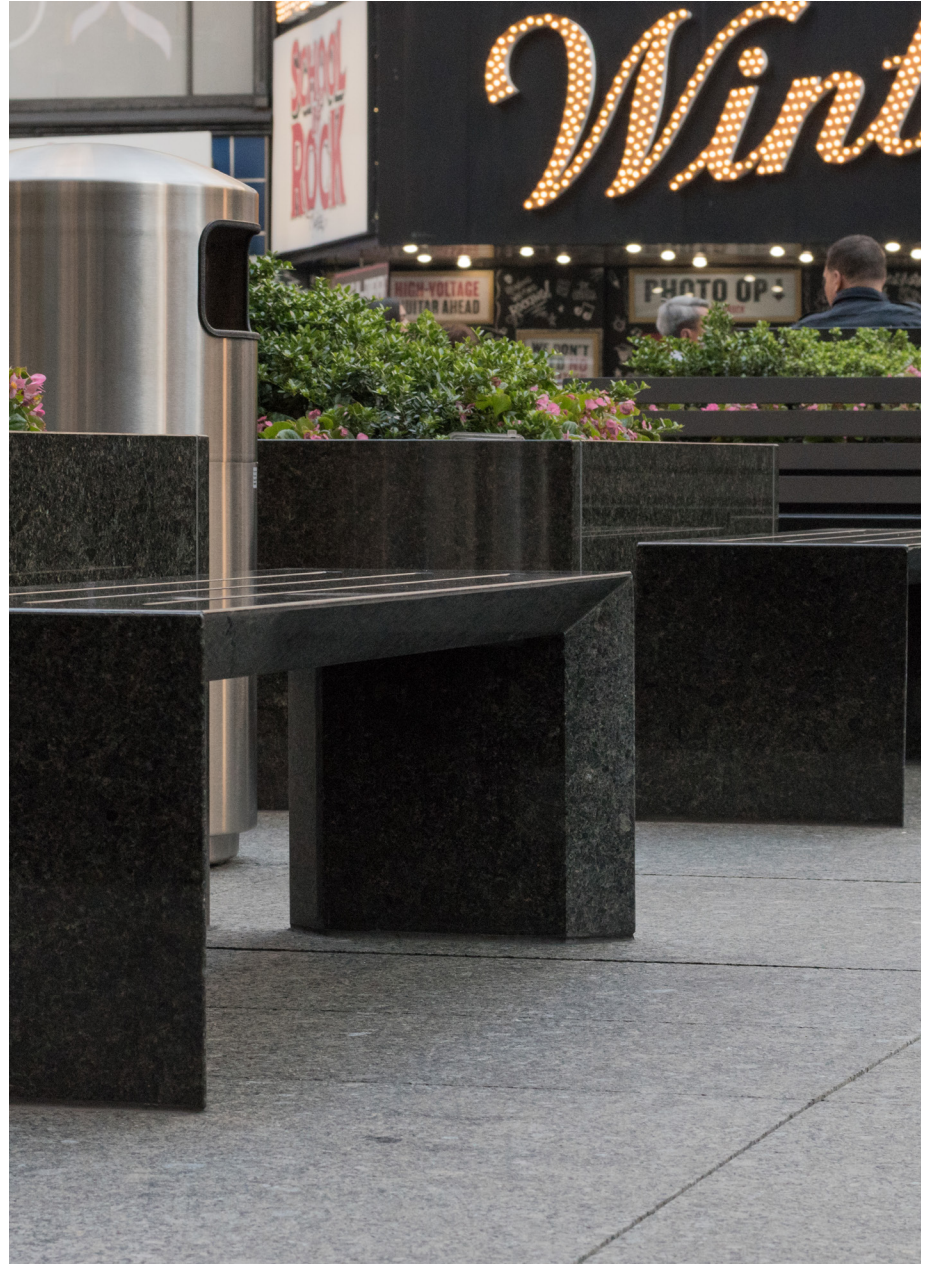
Unearthed in the mountainous countryside of Québec, this granite has a delectable combination of chocolaty tones punctuated by small, pale flakes. Ideal for exterior applications, its multifaceted undertones bring a gentle sophistication to any space.



Québec, Canada



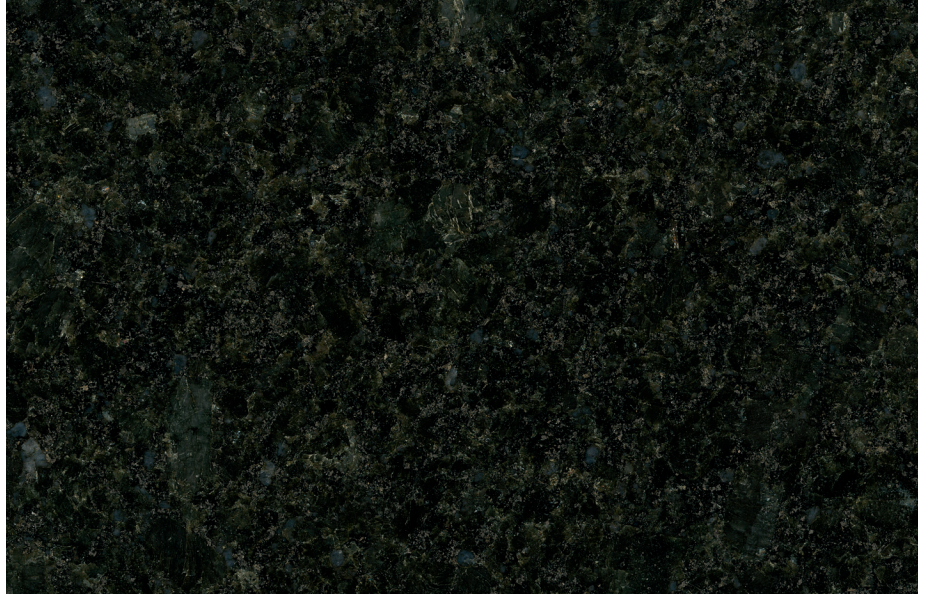
Bench, polished finish • Pavers, flamed finish • Walls, polished finish



Paramount Plaza
NYC, NY

The renovation of Paramount Plaza in New York City, led by the visionary MdeAS architects, has breathed new life into this iconic commercial landmark. With a commitment to enhancing both form and function, the project has ushered in a modern era of sophistication and innovation. The architectural transformation encompasses cutting-edge design elements, optimized spaces, and sustainable features, revitalizing Paramount Plaza into a contemporary square that harmonizes with the dynamic pulse of the city.

Architect: MdeAS



LAURENTIAN GREEN™

Granite

This pristine dark-green granite, flecked with blue quartz, is extracted in Québec. Perfectly homogenous, this stone provides a harmonious balance with nature, effortlessly mirroring the organic hues of its surroundings.



Québec, Canada



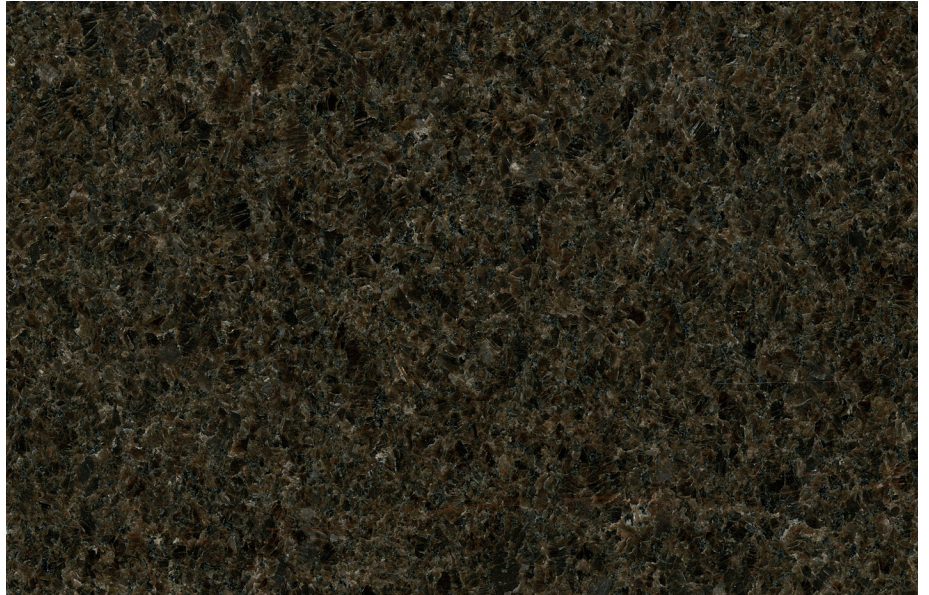
Place Vauquelin
Montréal, QC

The renovation of Place Vauquelin in Montreal, masterfully executed by Lemay Michaud architects, is a testament to the city's commitment to preserving its historical heritage while embracing modern urban evolution. With its innovative vision and design expertise, the firm has reinvigorated the square and reinforced its significance within the heart of Montreal, ensuring it remains a cherished place for both residents and visitors alike.

Architect: Lemay



Pavers, sandblasted, flamed, and waterjet finishes



PICASSO™ Granite

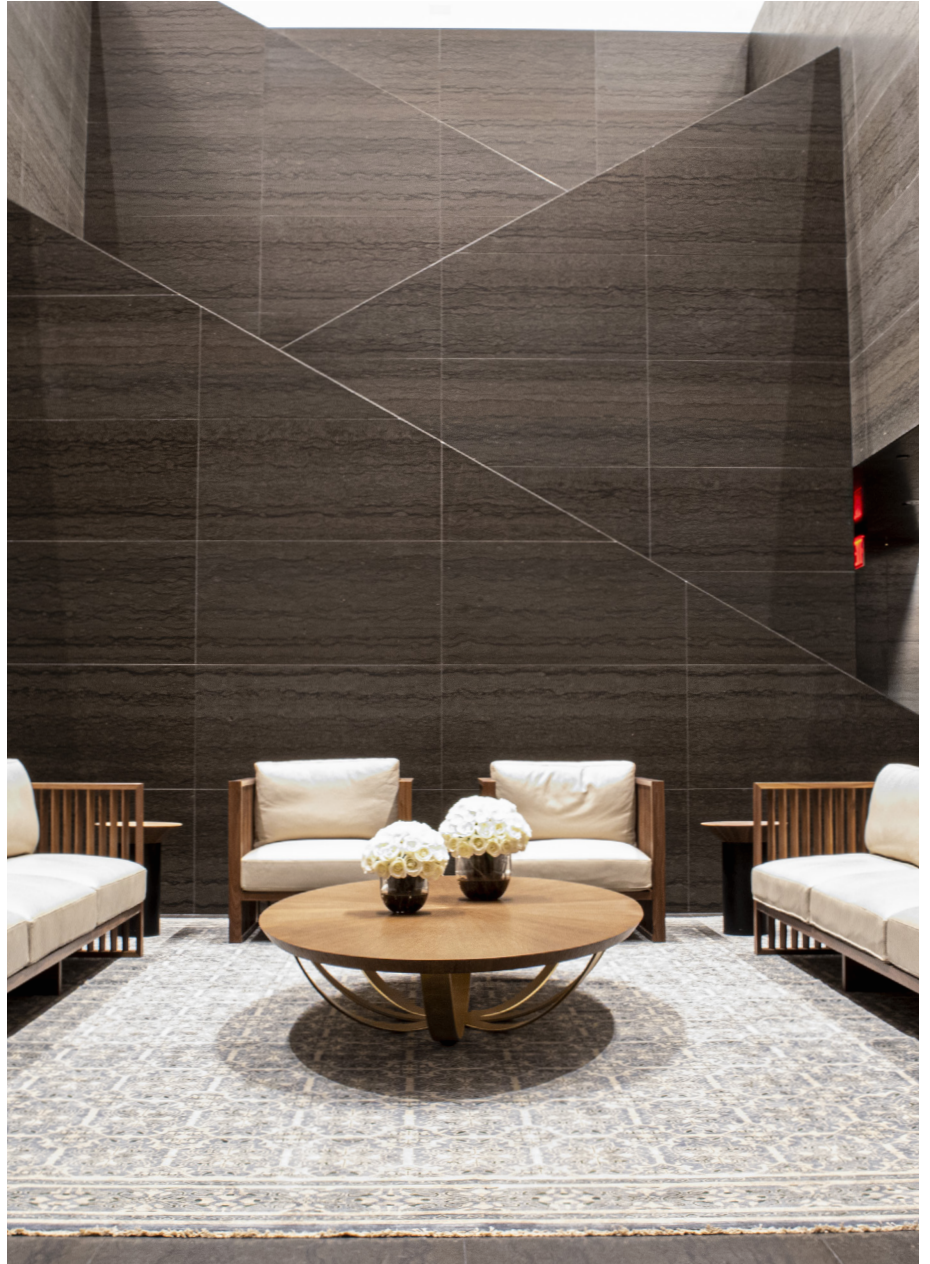
With its neutral hues, this beautiful Canadian stone quarried in Quebec boasts remarkable consistency and homogeneity in its coloration. It is distinguished by the rich neutral tones of its background color, accentuated by delicate orange veins that gracefully trace over its surface.



Québec, Canada



Interior walls, honed finish, linear cut



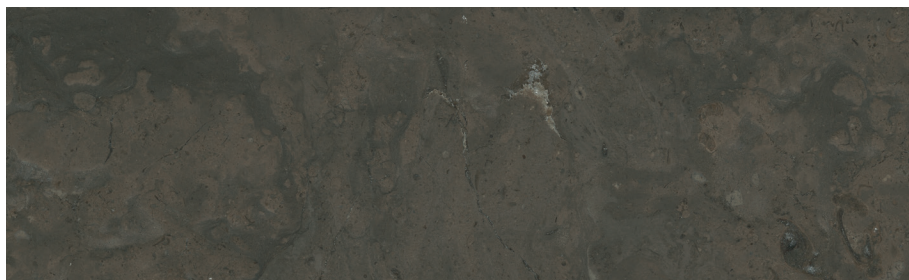
UAE Mission
NYC, NY

Architecture firm SOM has designed a limestone-clad building patterned with palm leaves - the international symbol for peace - for the Permanent Mission of the United Arab Emirates to the United Nations in Manhattan. The structure is designed to harmonize with New York's architectural past, the limestone in question being the same Indiana limestone used in the construction of Rockefeller Center and the Empire State Building. The building's double-height entry hall is finished with a palette of natural materials intended to evoke serenity, such as Northern Canadian limestone and serves as a dramatic yet inviting courtyard.

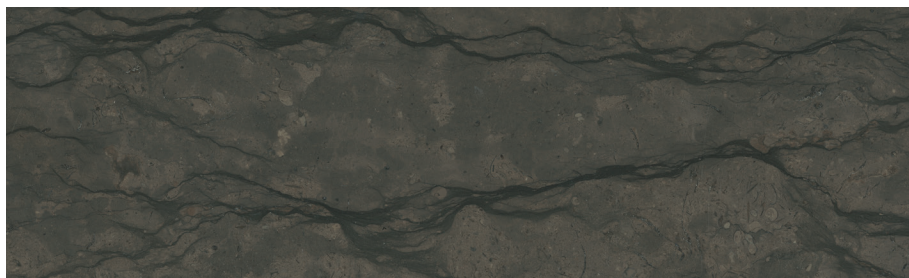
Appeared in



SAINT PIERRE™
Limestone - Fleuri Cut



SAINT PIERRE™
Limestone - Linear Cut



SAINT PIERRE™

Limestone

This rich chocolate-brown limestone originates from Québec, Canada. Perfectly suited for indoor applications, its understated yet rich shades promise to infuse any space with a delightful warmth. Whether it's the dramatic dark veining or the captivating undulation of light and dark tones, our stone offers a versatile aesthetic, ready to elevate your design vision.



Québec, Canada

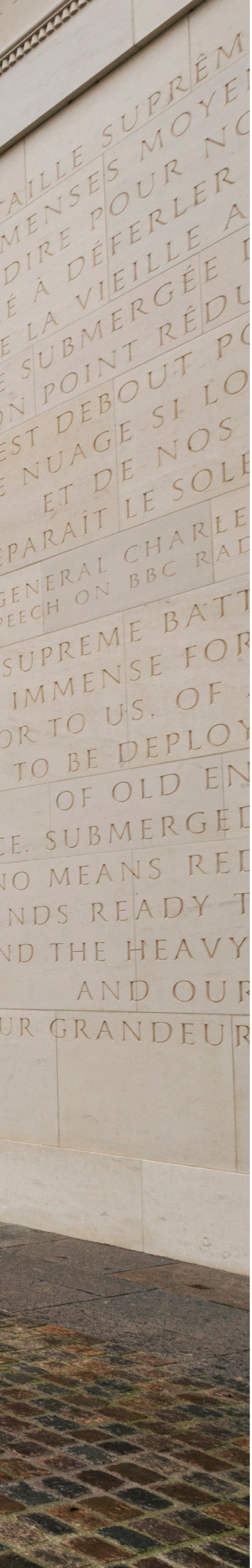


...THE BETTER DAYS THAT LIE AHEAD MEN WILL SPEAK WITH

LA BATAILLE
D'IM
C'EST A
ONT COMMENC
D
LA FRANCE
MAIS NO
LA FRANCE
DERRIERE LI
VOICI QUE RE

...THE LIFE IN HISTORY AND IN THE BETTER DAYS THAT LIE AHEAD MEN WILL SPEAK WITH
...THE LIFE IN HISTORY AND IN THE BETTER DAYS THAT LIE AHEAD MEN WILL SPEAK WITH
...THE LIFE IN HISTORY AND IN THE BETTER DAYS THAT LIE AHEAD MEN WILL SPEAK WITH

THE
AN
HAS BEGUN
FRANC
BUT BY N
STA
FROM BEHI
THE SUN OF O



NEUTRAL STONES



Princeton University
Princeton, NJ

Founded in 1746 as the College of New Jersey, Princeton University was originally intended to educate and train Presbyterian ministers. It changed its name to Princeton University in 1896 and is the fourth oldest university in the United States. The main campus consists of more than 200 buildings which, until the 1960s, were constructed in the Collegiate Gothic style for which the university is known today.

Architect: TWBTA



Interior and exterior pavers, flamed finish / Interior walls, flamed finish



CALEDONIA™ Granite

This durable granite from Québec is a Canadian emblem. Known for its color consistency, defined by multiple tones of deep beige with a spattering of dark flecks, the versatility of this neutral stone makes it an excellent choice for projects that will be completed in multiple steps.



Québec, Canada



INDIANA LIMESTONE - STANDARD BUFF™ limestone, vertical application, honed finish



Rockefeller Center
NYC, NY

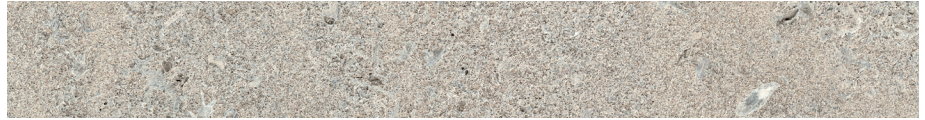
A towering symbol of optimism in the dark days of the 1930s, Manhattan's Rockefeller Center stands as a testament to the vision of its founder, John D. Rockefeller. The construction of the complex was conceived as an urban renewal project to help revitalize Midtown Manhattan.

While most pedestrians may not naturally direct their gaze upward while touring the city, natural stone aficionados will readily explain how the materials used in the construction and cladding of the building tell a fascinating story. Rockefeller Center's exterior showcases an array of 300-million-year-old fossil specimens, including remnants of sea moss, snails, and crinoids.

**INDIANA LIMESTONE -
STANDARD GRAY™**
Limestone



**INDIANA LIMESTONE -
RUSTIC GRAY™**
Limestone



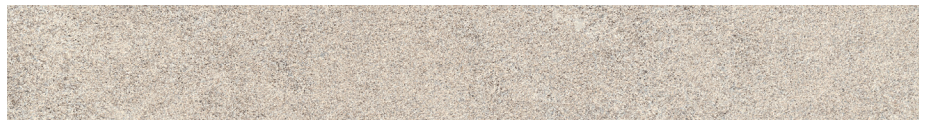
**INDIANA LIMESTONE -
STANDARD SILVER BUFF™**
Limestone



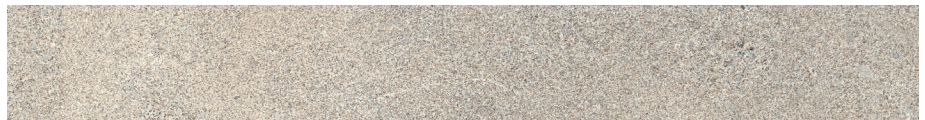
**INDIANA LIMESTONE -
RUSTIC BUFF™**
Limestone



**INDIANA LIMESTONE -
STANDARD BUFF™**
Limestone



**INDIANA LIMESTONE -
FULL COLOR BLEND™**
Limestone



INDIANA LIMESTONES

These renowned limestones from Indiana primarily find their purpose in outdoor applications, consistently delivering exceptional results. They grace the facades of countless landmarks across North America and can also be used for exterior cladding. Indiana Limestone's unique color blend ranges from medium gray to warm beige, infusing any space with a delightful radiance.



Indiana, USA



Metropolitan Square
Washington, DC

Metropolitan Square, located in the heart of downtown Washington, covers almost a whole city block, and overlooks prime attractions like The White House, the U.S. Treasury Department, and the National Mall. The building was recently reimagined, breathing fresh life into this timeless Washington landmark. The most dramatic and impactful change can be seen in the atrium, where elegant SAINT CLAIR™ marble is paired with wood features and connects the various amenities across two stories.

Architect: Gensler



Pavers, honed finish, linear cut

SAINT CLAIR™
Marble - Fleuri cut



SAINT CLAIR™
Marble - Linear cut



SAINT CLAIR™ Marble

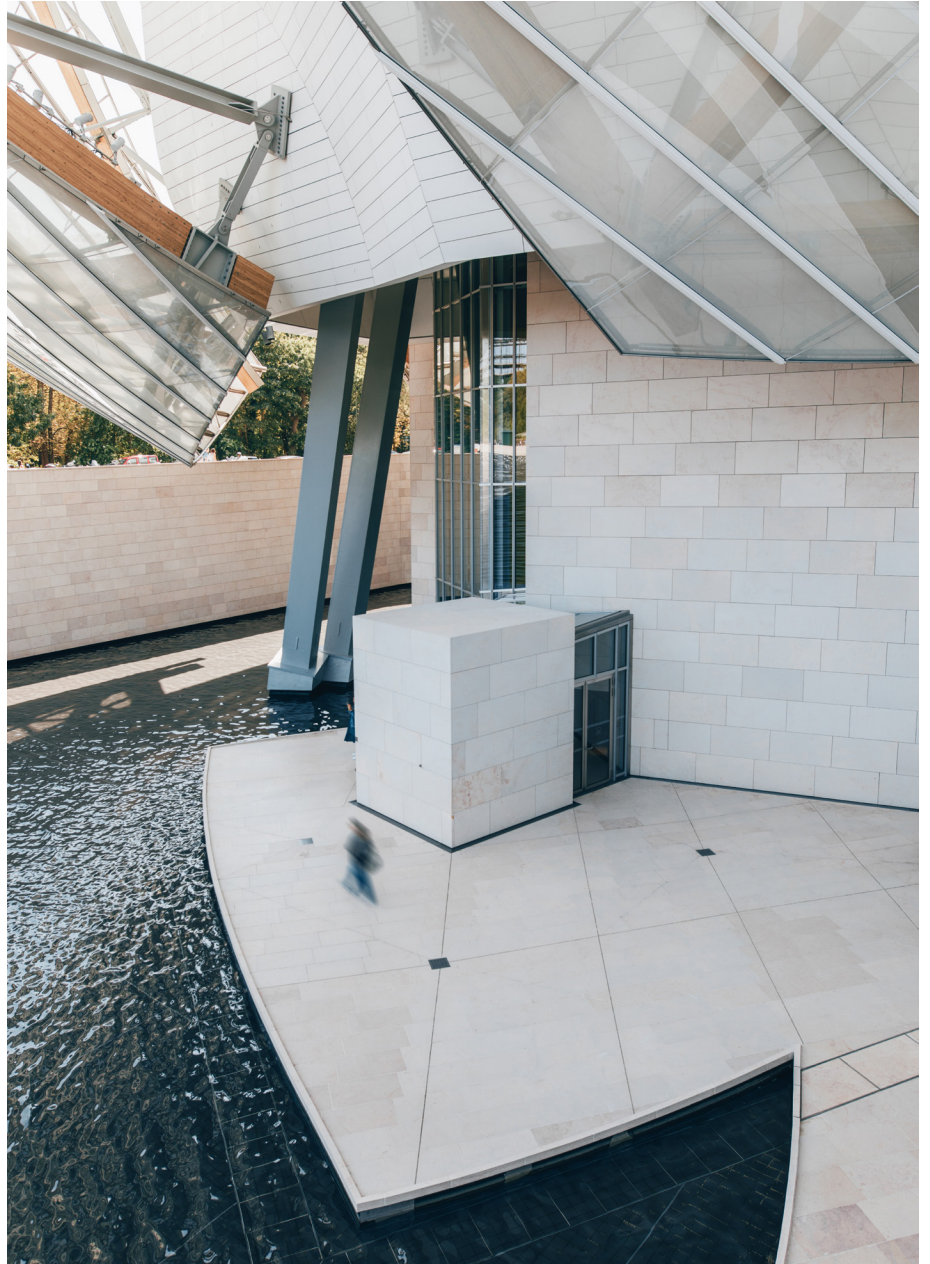
Extracted in Oklahoma, this monochromatic American marble boasts a delightful wavelike pattern that varies from one slab to the next. The manner in which the stone is cut influences the pattern, with Linear cuts unveiling soft evolutions of gray and beige accentuated by delicate dark veins, while Fleuri cuts evoke a vaporous, cloud-like motif.



Oklahoma, USA



ROCHERONS DORÉ™ french limestone, steps, pavers, and walls, flamed finish



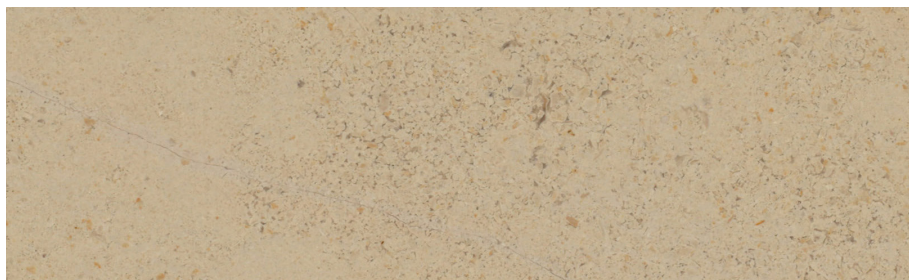
Fondation Louis Vuitton
Paris, France

Visionary architect Frank Gehry embarked on the ambitious undertaking of crafting a Parisian masterpiece that would embody France's cultural essence. An artisan of dreams, Gehry conceived a distinctive, emblematic, and audacious architectural marvel.

While upholding the rich historical traditions rooted in 19th-century French culture, Gehry fearlessly harnessed 21st-century technological advancements, thus paving the way for groundbreaking innovations. His architectural oeuvre seamlessly blends the timeless "art de vivre" with visionary audacity, all harmoniously interwoven with the cutting-edge capabilities afforded by modern technology.

Architect: Frank Gehry

ROCHERONS DORÉ™
French limestone



ROCHERONS DORÉ CLAIR™
French limestone



FRENCH LIMESTONES

Quarried in the world-renowned Burgundy region of France, these dense, fine-grained limestones have a compact structure giving them an almost marble-like appearance. They can be found in a range of earth tones ranging from light beige to warm beige-grey with occasional blush tones in the background, creating a unique visual texture.



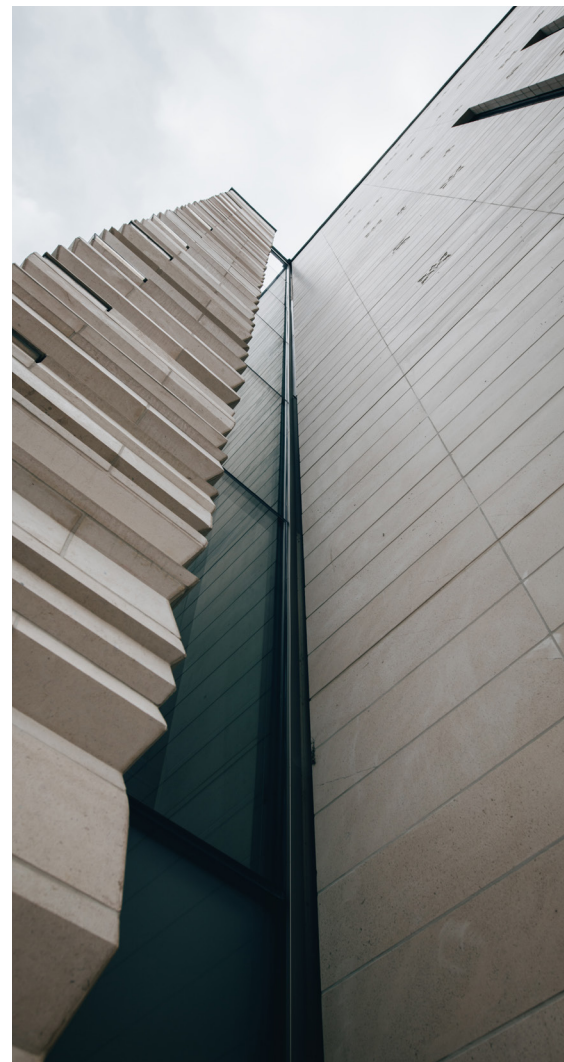
Burgundy, France



Centre Spirituel et Culturel Orthodoxe
Paris, France

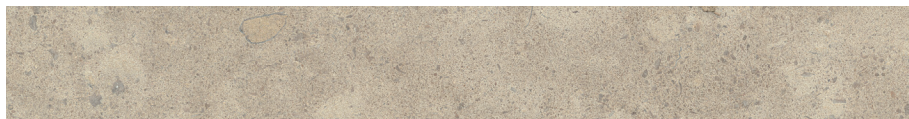
Throughout the entire project, the new Centre Spirituel et Culturel Orthodoxe Russe was built in compliance with sustainable practices, from design to completion. Sustainability is an integral part of every aspect of the project, from how it blends into the surrounding neighborhood to the versatility of the spaces and amenities, etc. The project was awarded the HQE Aménagement certification and complies with the City of Paris' Climate and Biodiversity Plans.

Architect: Wilmotte



Vertical applications:
MASSANGIS CLAIR NUANCÉ™ french limestone, honed finish
ROCHERONS DORÉ CLAIR™ french limestone, honed finish
ROCHERONS CLAIR™ french limestone, honed finish

MASSANGIS JAUNE CLAIR™
French limestone



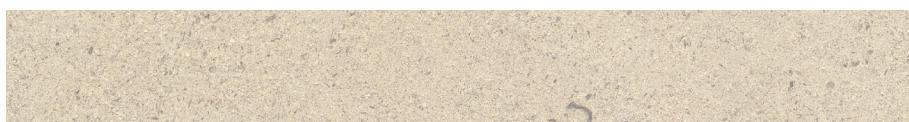
MASSANGIS CLAIR NUANCÉ™
French limestone



VALANGES™
French limestone



CHARMOT™
French limestone



FRENCH LIMESTONES

Unearthed at our prestigious Massangis quarry located in the Burgundy region of France, these classic French limestones are equally suitable for both modern and traditional designs. Finely blended with well-balanced pale-yellow and creamy backgrounds, they feature a uniform grain structure with occasional shell inclusions.



Burgundy, France



Maison Carrée
Nîmes, France

Erected in the 1st century CE in the Roman colony of Nemausus – today's Nîmes in France – the Maison Carrée is one of the best-preserved examples of a Roman temple from Rome's transition from republic to empire.

The temple's structural and ornamental components have endured in their pristine state or undergone meticulous restoration, emphasizing a commitment to preserving historical accuracy. Since the 17th century, the Maison Carrée has retained its original structural elements, apart from the roof, the pronaos ceiling, and the cella.



LENS™ French Limestone

This pristine, creamy white limestone from our Moulézan quarry in the Languedoc-Roussillon region of France, possesses excellent purity and a fine, compact grain structure. The neutral, ivory-toned background exhibits occasional crystalline slivers adding more depth to the surface—a great option where a monochromatic aesthetic is required.



Languedoc-Roussillon, France



Bench, TITANIUM PEARL™ granite honed finish
Pavers, CAMBRIAN BLACK™ and TITANIUM PEARL™ granites, flamed finish

50th Street Vent
NYC, NY

The design and construction of the 50th Street Vent in New York City, led by Aecom Architects, represent a remarkable feat of urban engineering. Completed as part of the city's extensive infrastructure development, this essential ventilation structure combines modern design and functionality. Aecom's expertise has not only ensured efficient subway ventilation but has also seamlessly integrated the vent into the cityscape, exemplifying a harmonious balance between practicality and architectural ingenuity.

Architect: Aecom





TITANIUM PEARL™

Granite

Quarried exclusively at Polycor's site in Québec, the consistency of this tight-grained granite's primary color is extremely stable. Its blue-gray hues and concrete-like aspect make it a popular choice for all types of applications.



Québec, Canada

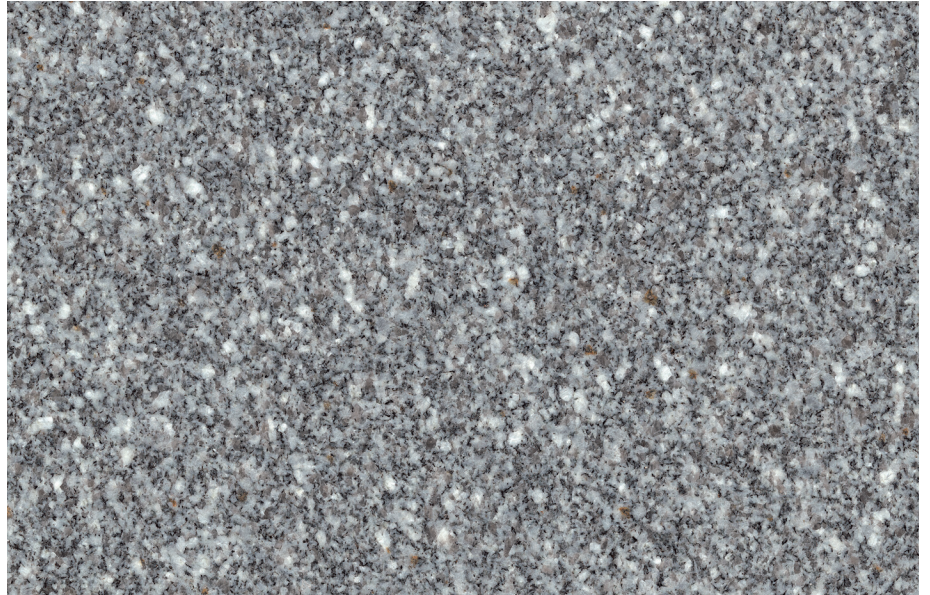


SFU Burnaby Campus Plaza
Burnaby, BC

Built in 1965, the Simon Fraser University Campus is among the most significant pieces of Canadian architecture. The Plaza serves a double function: as an open-air public space and as a roof sheltering education spaces beneath. The upgrades to the outdoor central spine, a processional route of great significance to the campus, have greatly improved the user experience through the aesthetic renewal of the campus outdoor public space.

Architect: Public





BARRE GRAY™ Granite

Globally acclaimed for its superior quality and renowned as the premier gray granite variety, BARRE GRAY™ granite, extracted from our quarries in Vermont, stands as the ultimate, is the ultimate long-lasting choice in any finish. Its exceptional blend of quartz and feldspar renders it exceptionally robust, moisture-resistant, and thermally stable.



Vermont, USA



Sunlife Building
Montréal, QC

The construction of the Sun Life Building, nestled in the heart of Montreal, stands as a testament to architectural and engineering excellence. Completed in 1931, this iconic skyscraper was designed by the eminent architectural firm Darling and Pearson. With its distinctive Art Deco style, the Sun Life Building quickly became a symbol of Montreal's economic prowess and urban grandeur. The towering edifice's construction represented a bold step forward in modern architecture and, to this day, remains a prominent fixture in Montreal's cityscape, serving as both a historical landmark and a beacon of the city's enduring vitality.



Vertical application, flamed finish



STANSTEAD GREY™

Granite

Quarried in Québec, this light to medium grey granite has a mid-size coarse grain structure. Its salt and pepper specks are evenly distributed, making it highly consistent in color—an ideal choice for exterior applications.



Québec, Canada



Pavers, thermal finish



World War II Memorial
Washington, D.C.

The construction of the World War II Memorial in Washington, D.C., commemorates the sacrifices of those who served and sacrificed during a pivotal chapter in global history. Dedicated in 2004, this national tribute was designed by architect Friedrich St. Florian. The memorial's classical architectural style, with its grand arches and bronze sculptures, captures the solemnity and honor due to the Greatest Generation. Situated on the National Mall between the Washington Monument and the Lincoln Memorial, the World War II Memorial serves as a lasting testament to the courage of those who contributed to the war effort, ensuring their memory is forever etched in the heart of the nation's capital.



GREENE COUNTY GRANITE™

Granite

This evenly structured, granular granite contains medium-coarse grains and features a white background with pale taupe and light-green tones scattered throughout. Quarried in North Carolina, its fine grey and black grains are clustered between larger patches of feldspar and quartz crystal.



North Carolina, USA



Toronto Waterfront
Toronto, ON

The renovation of Toronto's waterfront has brought new life to this iconic cityscape. As part of this revitalization project, stone maple leaves were elegantly incorporated into the walkway, serving as symbolic reminders of Canada's rich heritage and natural beauty. The renovation represents a harmonious blend of urban modernity and natural elements, providing a serene and picturesque space for both residents and visitors to enjoy along the Toronto waterfront.

Architect: DTAH



Cobblestones, waterjet finish



SAINT SEBASTIEN™

Granite

Another classic Canadian stone from Québec, this granite holds a storied legacy as a heritage material, having contributed to the construction of numerous iconic regional buildings. Distinguished by its warm gray and understated beige hues, it stands apart from other architectural granites, offering seamless compatibility with diverse stone materials for design and construction purposes.



Québec, Canada



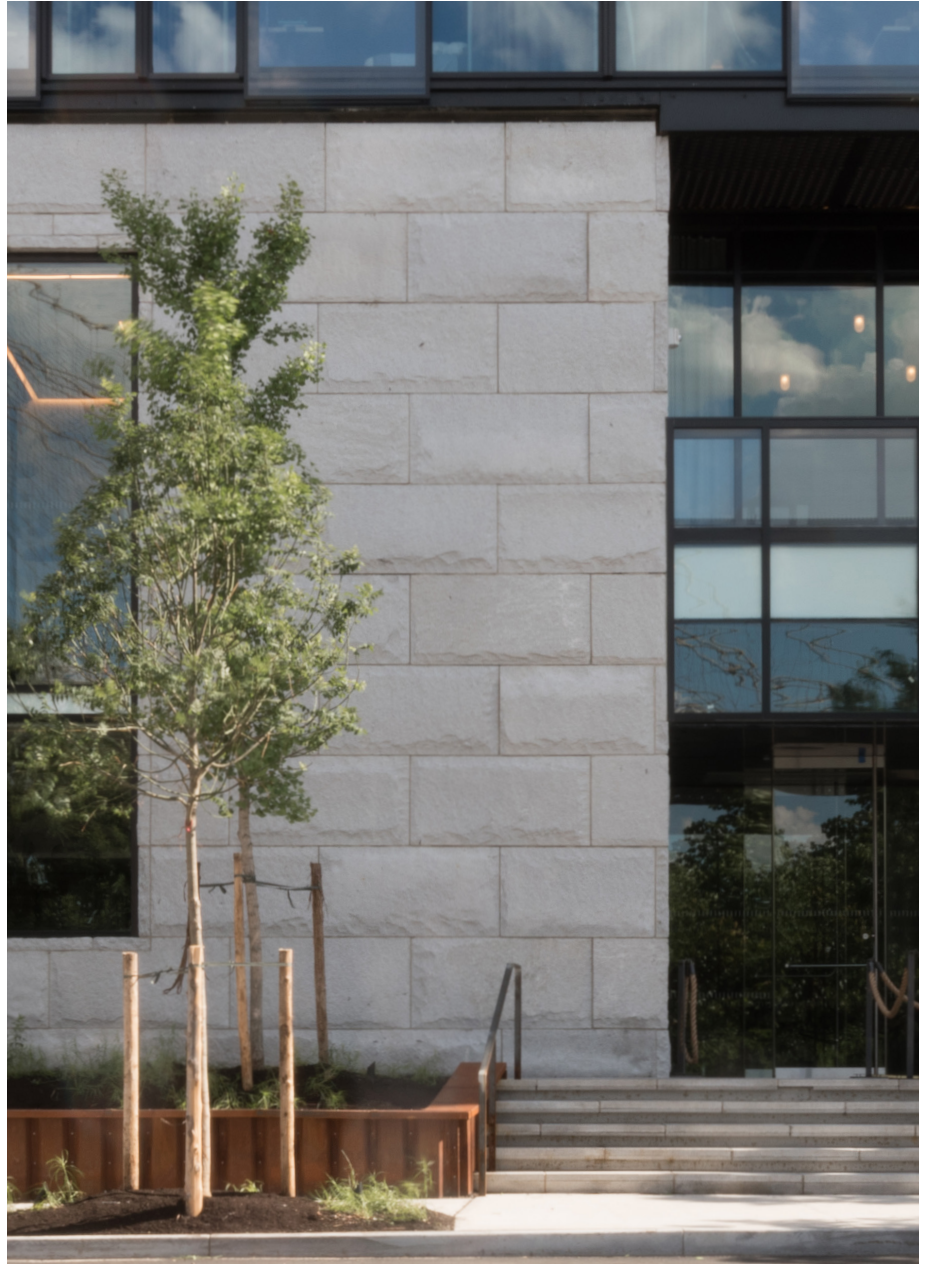
Franklin D. Roosevelt Four Freedoms State Park
New York, NY, USA



LIGHT STONES



Vertical application, rock pitched finish



Pierhouse at Brooklyn Bridge Park
Brooklyn, NY

The construction of the Pier House at Brooklyn Bridge Park in Brooklyn, New York City, stands as a testament to urban renewal and architectural excellence. Completed as a vital component of the Brooklyn Bridge Park development, this modern building seamlessly combines innovative design with stunning waterfront views. The construction process brought together a collective effort to create a multifunctional space where residents and visitors can revel in the scenic beauty of the East River, the Brooklyn Bridge, and the Manhattan skyline.



JAY WHITE™ Granite

Sourced from Polycor's exclusive quarry in Maine, this pristine and uniform granite variety is easy to craft, achieving an exceptionally bright, ultra-white appearance when subjected to a thermal finish. It is a frequent choice for architectural projects, such as monuments and curbing in the United States, owing to its remarkable structural properties and excellent durability.



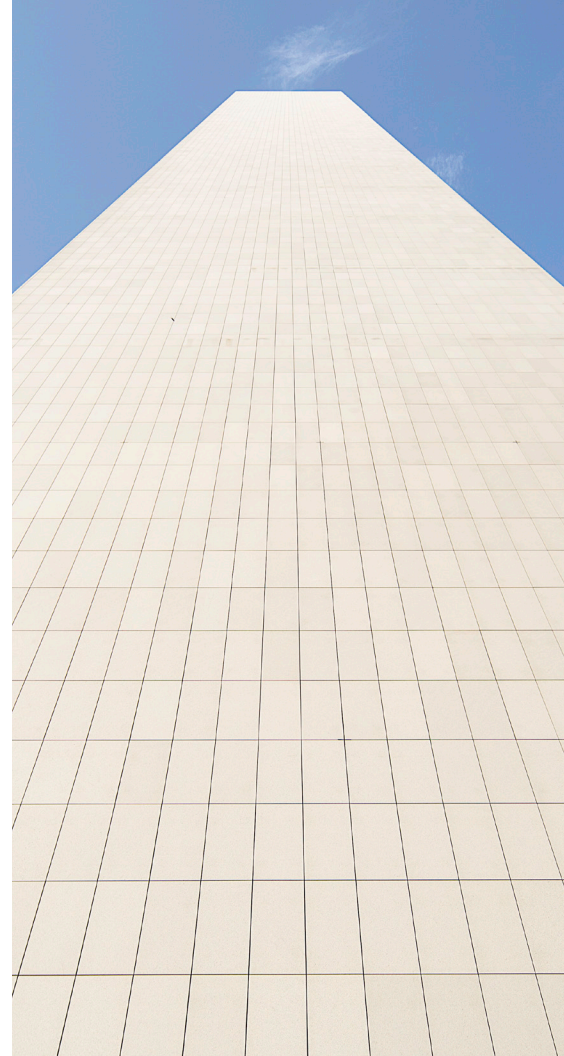
Maine, USA



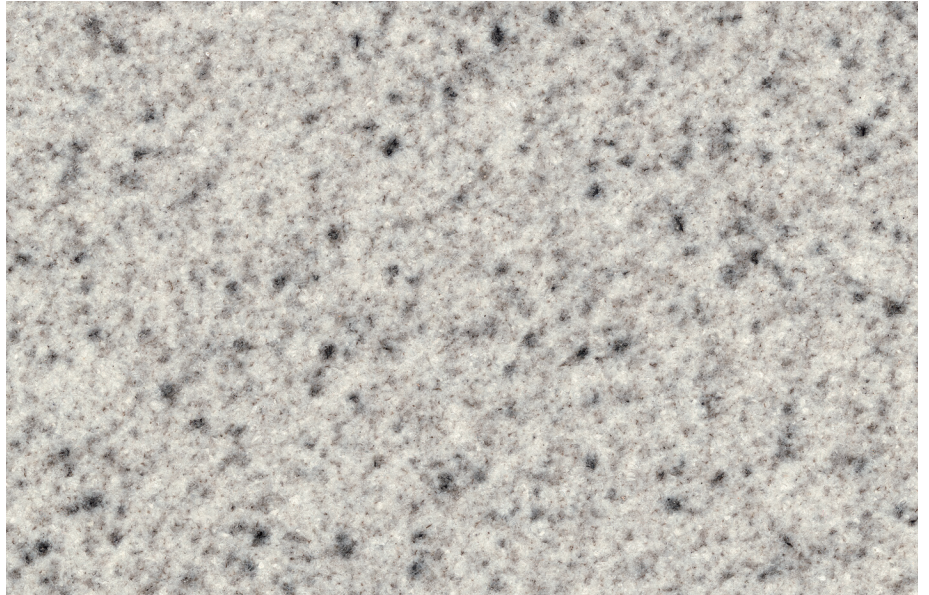
ADNOC Headquarters
Abu Dhabi, UAE

Meticulously designed by HOK architects, the ADNOC Building in Abu Dhabi is an iconic addition to the city's skyline. The thoughtfully selected natural stone cladding not only ensures the building's aesthetic distinction but also serves to provide thermal comfort and energy efficiency. This architectural marvel showcases HOK's commitment to harmonizing modern design with sustainable principles, exemplifying a structure that not only stands as a visual masterpiece but also contributes to the environmental integrity of Abu Dhabi.

Architect: HOK



Vertical application, flamed finish



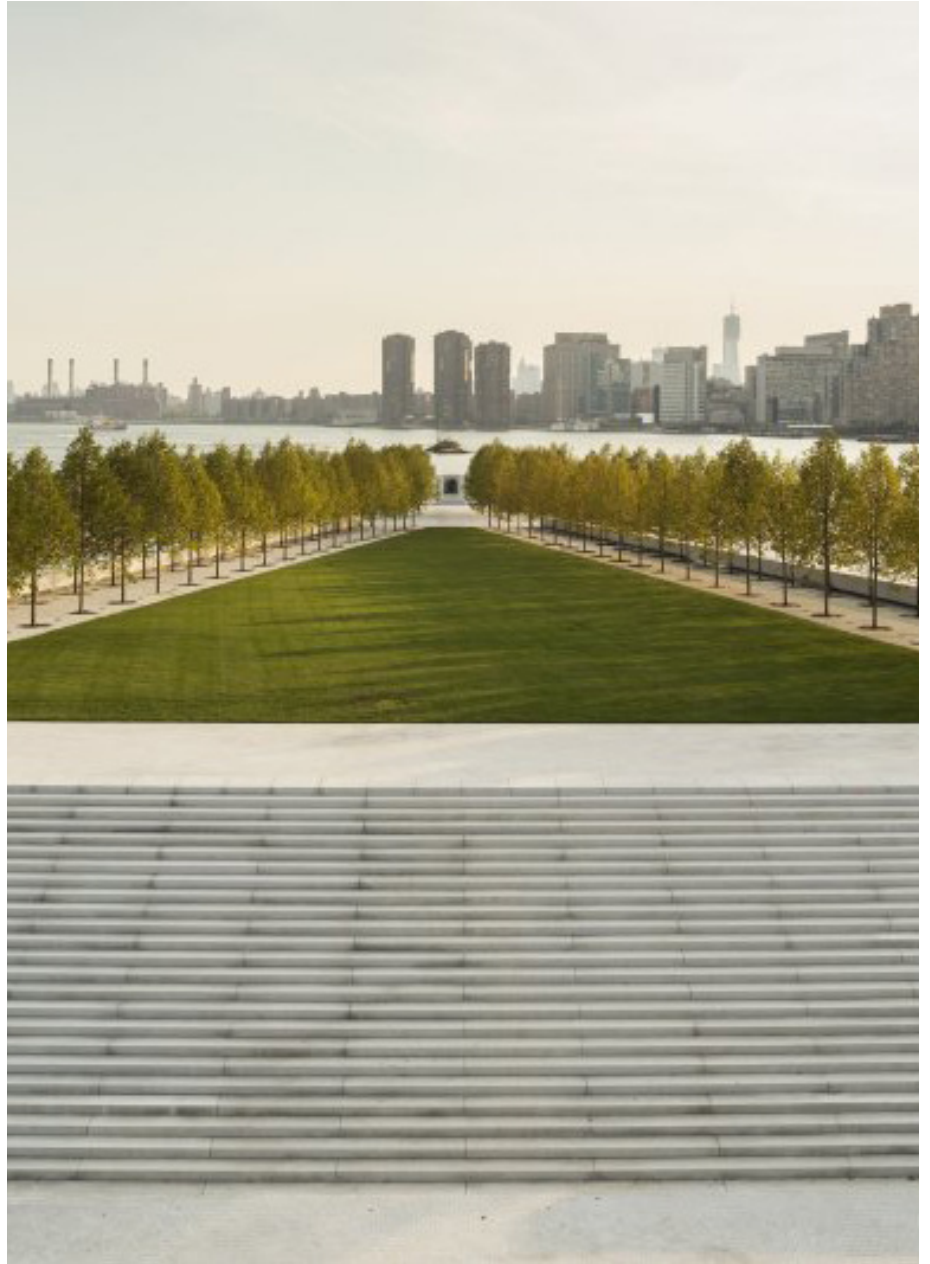
BETHEL WHITE™

Granite

This flawless white granite quarried in Vermont is one of the most prized in the world. Its pure white base is sprinkled with tiny black flakes for an effortlessly classic look, easily matched with a variety of styles and colors.



Vermont, USA



**Franklin D. Roosevelt Four
Freedoms Park & Memorial**
Roosevelt Island, NY

The design and construction of the Franklin D. Roosevelt Four Freedoms Park & Memorial on Roosevelt Island, New York, is a poignant testament to the legacy of the USA's 32nd president. Conceived by the esteemed architect Louis I. Kahn, this timeless monument captures the spirit of Roosevelt's famous "Four Freedoms" speech. The park's construction involved meticulous attention to detail, with granite blocks quarried from North Carolina meticulously placed to create a tranquil, contemplative space with stunning views of the East River and the United Nations Headquarters. This lasting tribute to FDR's vision for freedom stands as a shining example of architectural and civic excellence, welcoming visitors from around the world to reflect on the values of democracy and human rights.



WHITE MOUNT AIRY GRANITE™

Granite

Extracted at the world's largest open-air quarry located in North Carolina, this iconic signature granite has been used on multiple projects worldwide. Known for its unmistakable, predominantly white color, it also includes a mixture of light gray, medium-grained specks.



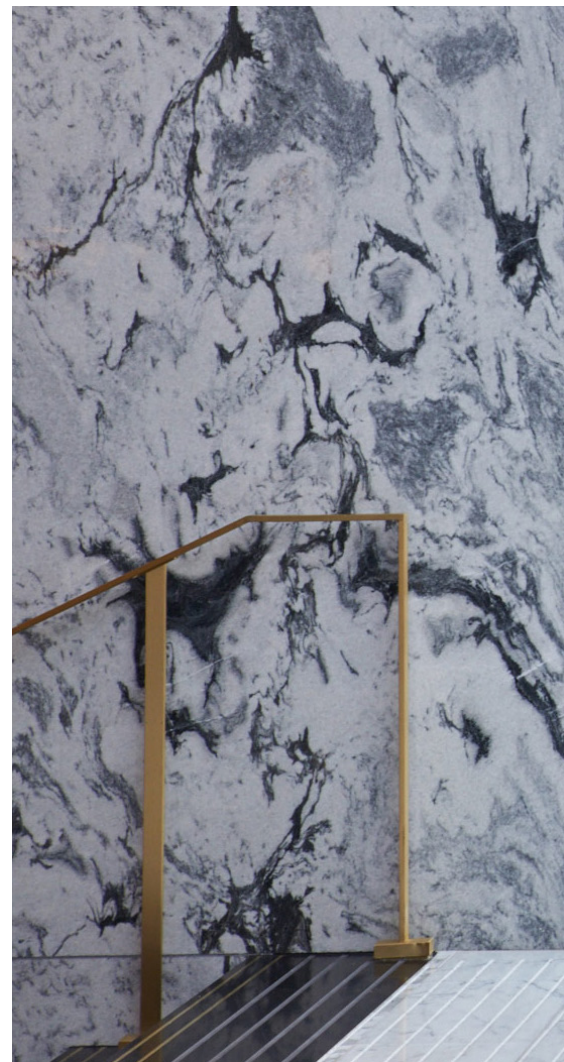
North Carolina, USA



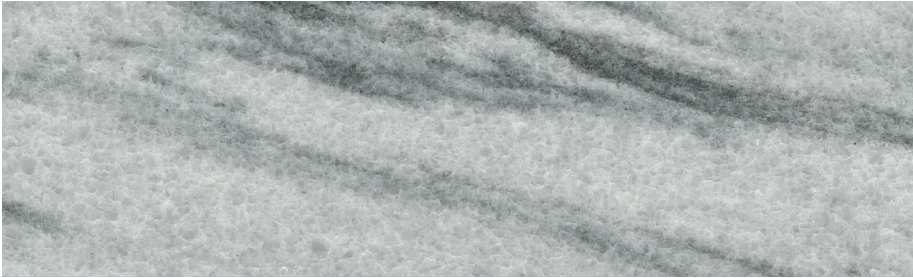
Thin slab wall cladding, polished finish

The Ritz-Carlton Hotel
Chicago, IL

Built in 1975, the Ritz-Carlton Chicago has recently undergone a complete transformation. To establish a strong core narrative, the architects, BAMO, were inspired by the GEORGIA MARBLE™ WHITE CHEROKEE™ and GEORGIA MARBLE™ PEARL GREY™ marbles used to clad the facade of the building to maintain the connection between the building's interior and exterior. The hotel's contemporary renovation epitomizes the city's heritage of architecture, forward-thinking design, and industrial innovation.



GEORGIA MARBLE™ PEARL GREY™
Marble



GEORGIA MARBLE™ WHITE CHEROKEE™
Marble



GEORGIA MARBLES

The consistent grain structure of this North American marble from Georgia contributes to its strength and resistance. The trilogy of white, gray, and black veins creates a dramatic statement that immediately draws the eye making it the star attraction of any space.



Georgia, USA

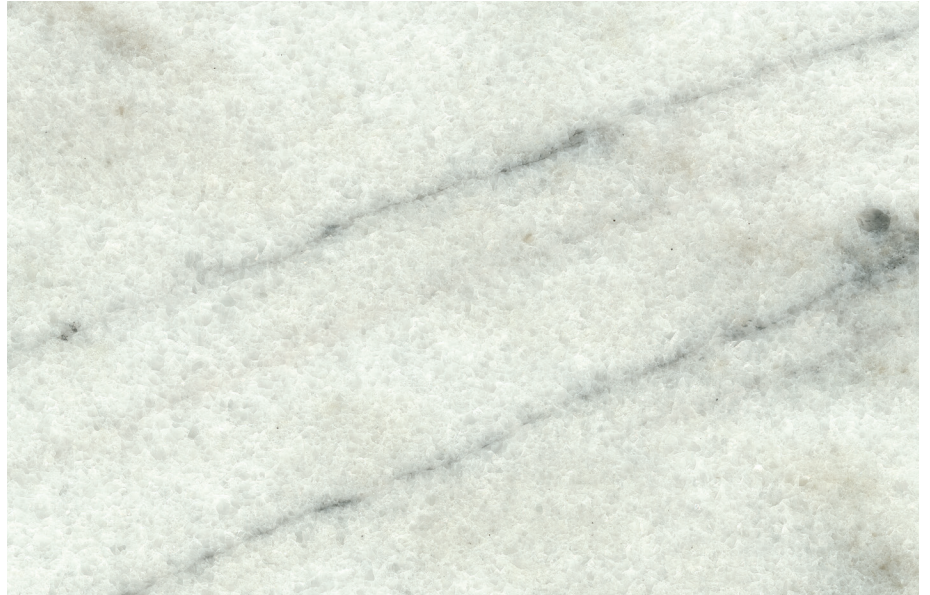


Vertical application, sandblasted finish



Minnesota State Capitol
St Paul, MN

The Minnesota State Capitol Building in St. Paul, Minnesota, is a remarkable testament to architectural and historical significance. This majestic structure, designed by renowned architect Cass Gilbert, showcases a stunning blend of Beaux-Arts and Renaissance Revival styles. The construction process, which began in 1896, spanned several years and involved an array of skilled artisans and craftsmen. The building's distinctive white marble exterior and grand dome make it an iconic symbol of Minnesota's government and history. Today, it continues to serve as a hub of civic life and government functions, offering visitors a glimpse into the state's rich heritage and architectural grandeur.



GEORGIA MARBLE™

WHITE GEORGIA™

Marble

Sourced from Polycor's exclusive quarry in Georgia, this marble exhibits subdued hues and delicate veining. It has played an integral role in constructing numerous historical American landmarks, its muted waves infusing each piece with subtle movement.



Georgia, USA



Stone is the past
and the future of
building materials.



Trocadéro, Paris, France
MASSANGIS JAUNE™
French Limestone



POLYCOR
NATURAL STONE

Polycor Inc. products are natural. Subtle variations in color and texture do occur and are part of what makes natural stone unique and attractive. We cannot guarantee an exact match to any of the photographic images contained in this brochure. Polycor Inc.'s continuing attention to product improvement requires that product specifications, technical information, and availability are subject to change without notice.

© 2024 Polycor Inc. All Rights Reserved.



Scan this QR Code to find
a stone expert in your region.

polycor.com

Contact Us

+1 418.692.4695



Our natural stones are quarried and
processed in the Canada, France and USA.

